

# High Voltage Power Capacitors Three-Phase Units

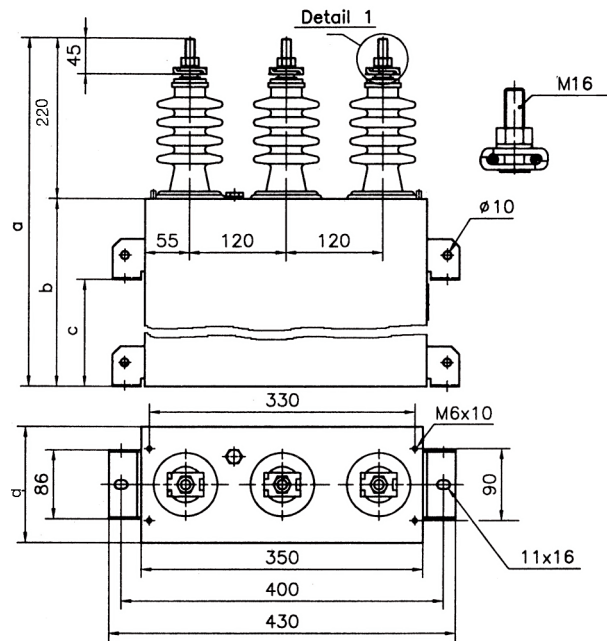
High voltage power capacitors are designed and manufactured by using latest technology and high quality materials. They have all-film dielectric and are impregnated with dielectric liquid which is bio-degradable in environment. Each capacitor element has a separate internal fuse. In addition, each capacitor is provided with an internal discharge resistor.

All capacitors have low losses, and are constructed to be light in weight. The high voltage power capacitors comply with most national and international capacitor standards.



## TECHNICAL DATA

<b>Type:</b>	impregnated all-film dielectric
<b>Rated voltages:</b>	3300 V or 6600 V
<b>Rated frequency:</b>	50 Hz or 60 Hz
<b>Average losses:</b>	0.15 W/kvar
<b>Dielectric liquid:</b>	non-pcb polypropylene
<b>All-film dielectric:</b>	-40°C/C (+50°C)
<b>Temperature category:</b>	IEC 60871-1
<b>Standards to be applied:</b>	IEC, ANSI/IEEE, CSA,
<b>Standard colour:</b>	grey (RAL 7035)



## DIELECTRIC LIQUID

The dielectric liquid is specially made for power capacitors and it is chosen by Nokian Capacitors because of its excellent electrical properties and heat stability at both lower and elevated temperatures. It is non-pcb, non-chlorine and biodegradable.

- The capacitor units are equipped with weld type porcelain bushings.
- Capacitor containers are made of stainless steel and painted with suitable primer coat prior to finishing coat to ensure prolonged durability.
- Capacitors for specific purposes can be designed and manufactured to meet customers' requirements.

## Standard types

Type	Power kvar		Voltage V	Dimensions mm				Weight kg
	50 Hz	60 Hz		a	b	c	d	
QYLP	50	60	3300/6600	500	280	180	145	28
QYLP	75	90	3300/6600	520	300	200	145	29
QYLP	100	120	3300/6600	580	360	260	145	33
QYLP	150	180	3300/6600	680	460	360	145	39
QYLP	200	240	3300/6600	800	580	480	145	47
QYLP	250	300	3300/6600	920	700	600	145	55
QYLP	300	360	3300/6600	1040	820	720	145	63
QYLP	350	420	3300/6600	1140	920	820	145	69
QYLP	400	480	3300/6600	1200	980	880	145	73
HYLP	450	540	3300/6600	1000	780	680	200	80
HYLP	500	600	3300/6600	1080	860	760	200	87
HYLP	550	660	3300/6600	1140	920	820	200	92
HYLP	600	720	3300/6600	1220	1000	900	200	98

In line with our policy of systems development we reserve the right to alter specifications.